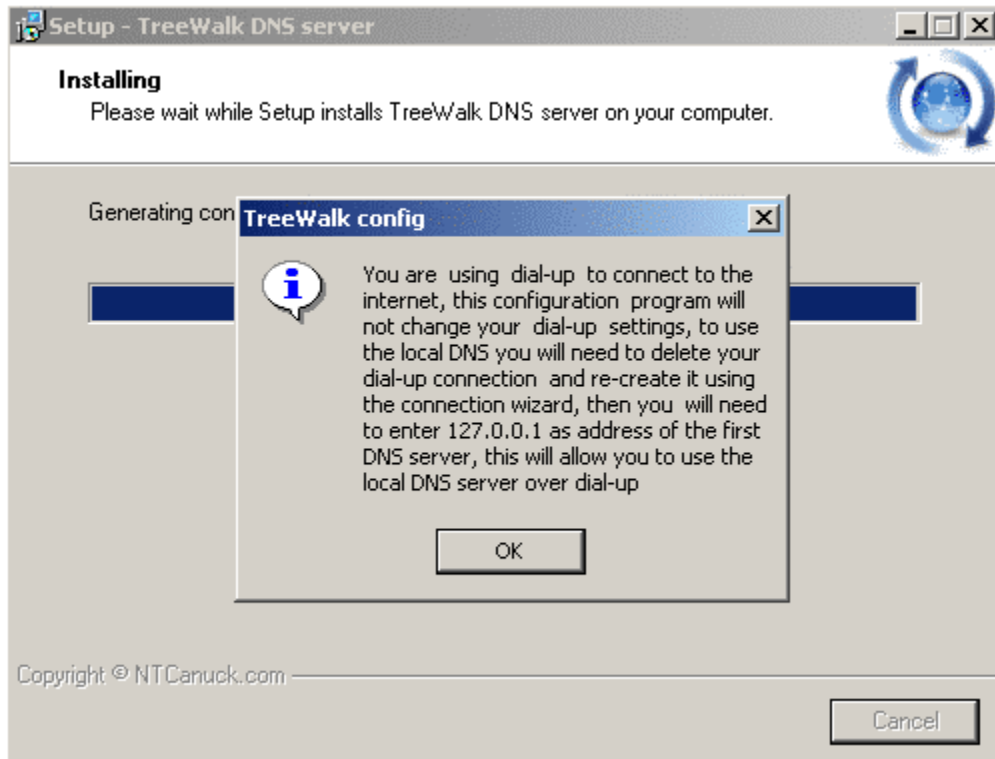


# TreeWalk and Windows 2000 Dial-up

***Make sure you have ALL the information required to connect to your ISP before you begin!***

While installing TreeWalk for your Windows 2000®™ Dial-up Internet Connection, you will be presented with a message similar to the one shown below:

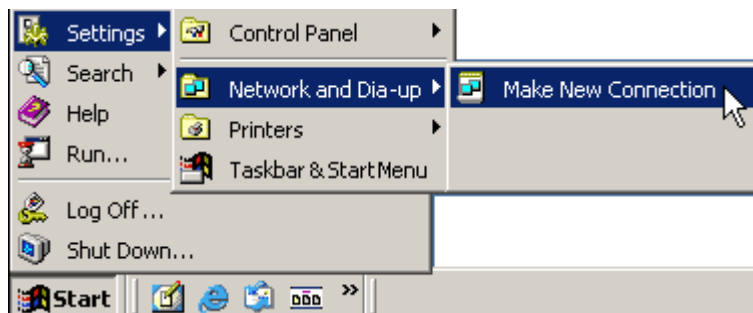


Click the "Okay" button and proceed with the installation requirements. After the necessary reboot, test your Dial-up Internet Connection. If you have determined that you need to recreate it and you have copied all of the required information needed to connect to your ISP, delete your current dial-up connection and follow the steps below to make another.

**Please proceed to the following image on the next page of this document.**



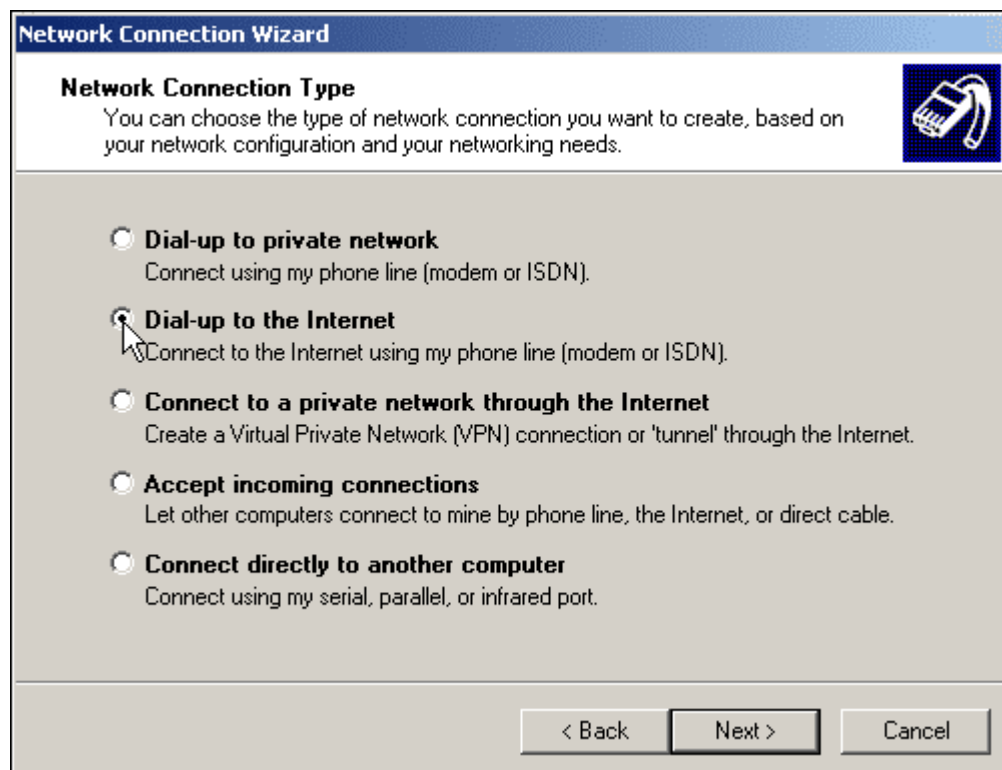
You can access the "Network and Dial-up Connections" icon in the Control Panel applet to delete your old connection and to make another if you don't have access through your "Start" menu as shown next. (If you have any trouble doing this, just press the "F1" function key on your keyboard and enter "Control Panel", without the quotation marks, into Windows Help.)



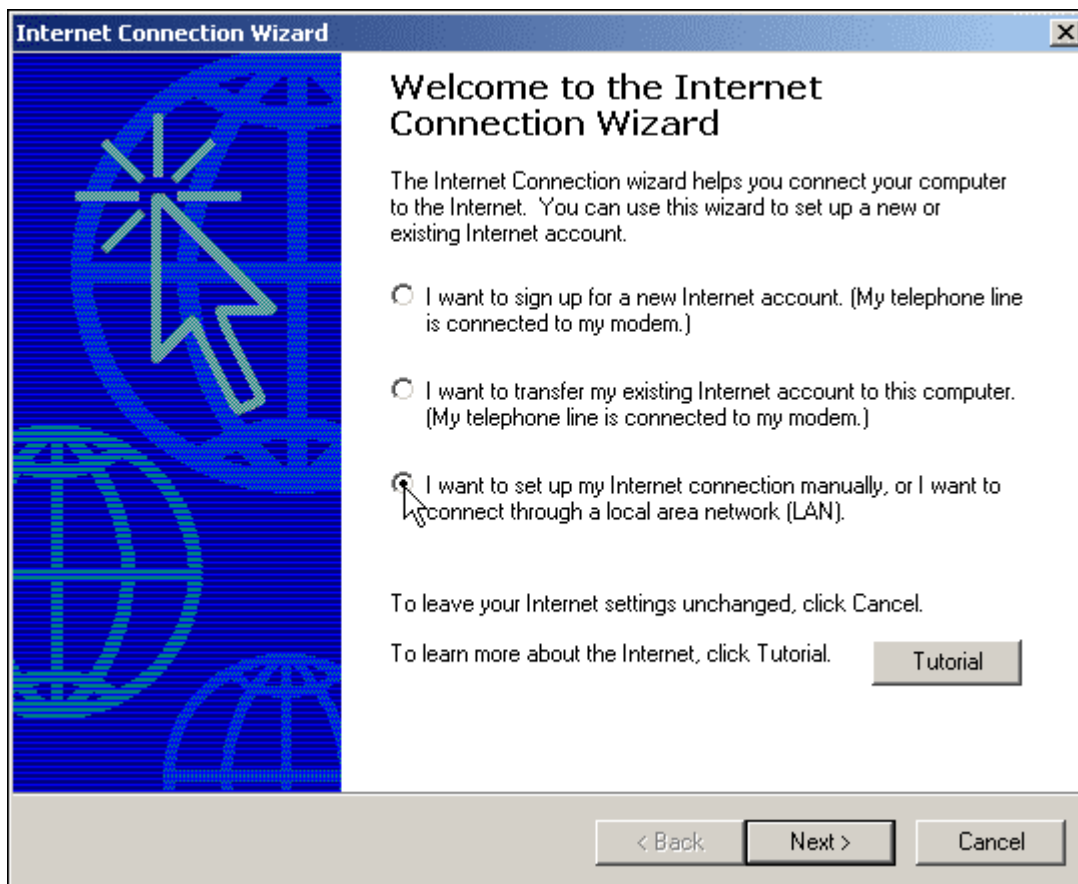
Okay, now you've deleted your old connection icon inside "Network and Dial-up Connections". We'll use another way to begin recreating it, if you're not comfortable working within the Control Panel (as depicted above). Beginning at the "Start" menu button, select these items in the same order: Start > Settings > Network and Dial-up Connections > Make New Connection. (As you might notice, you may be able to gain access to the Control Panel this way too.)



You should now be at the "Network Connection Wizard". Click "Next".

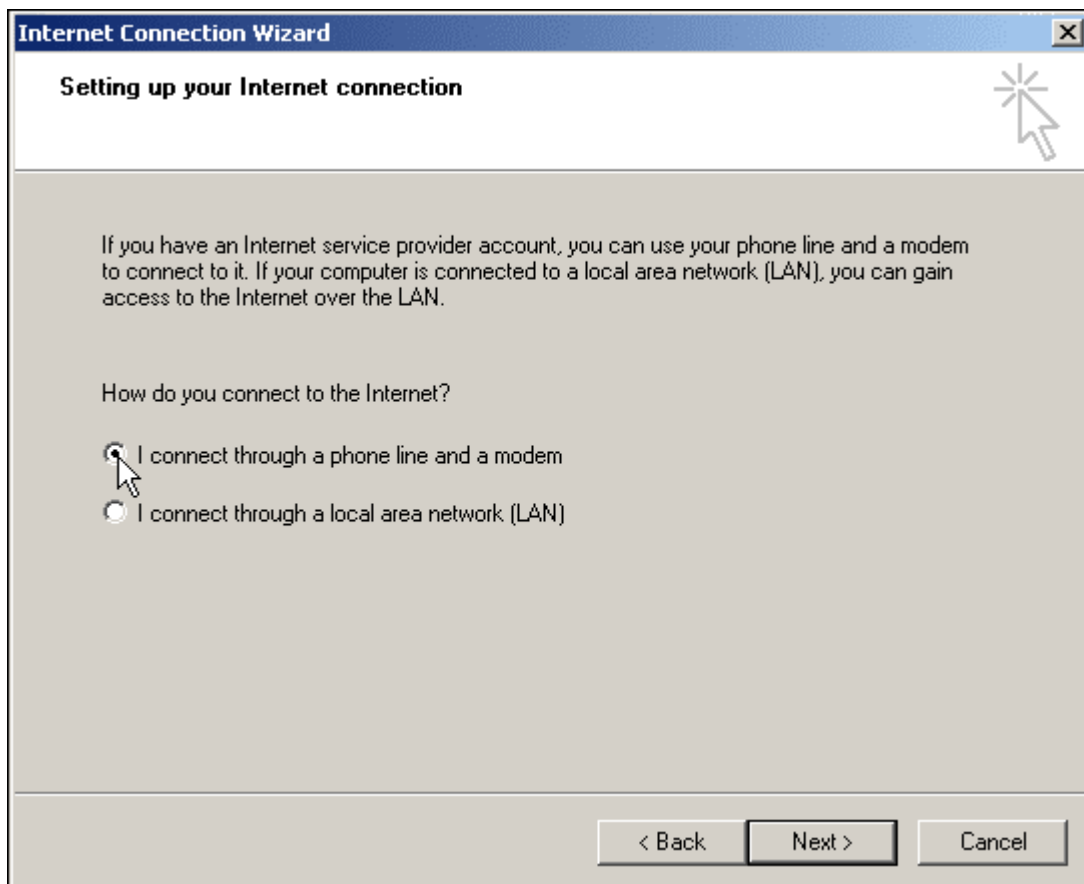


At "Network Connection Type", select "Dial-up to the Internet" and click "Next".



This brings us to a new wizard, the "Internet Connection Wizard". Select "I want to set up my Internet connection manually, or I want to connect through a local area network (LAN)" and click "Next".

**Please proceed to the following image on the next page of this document.**



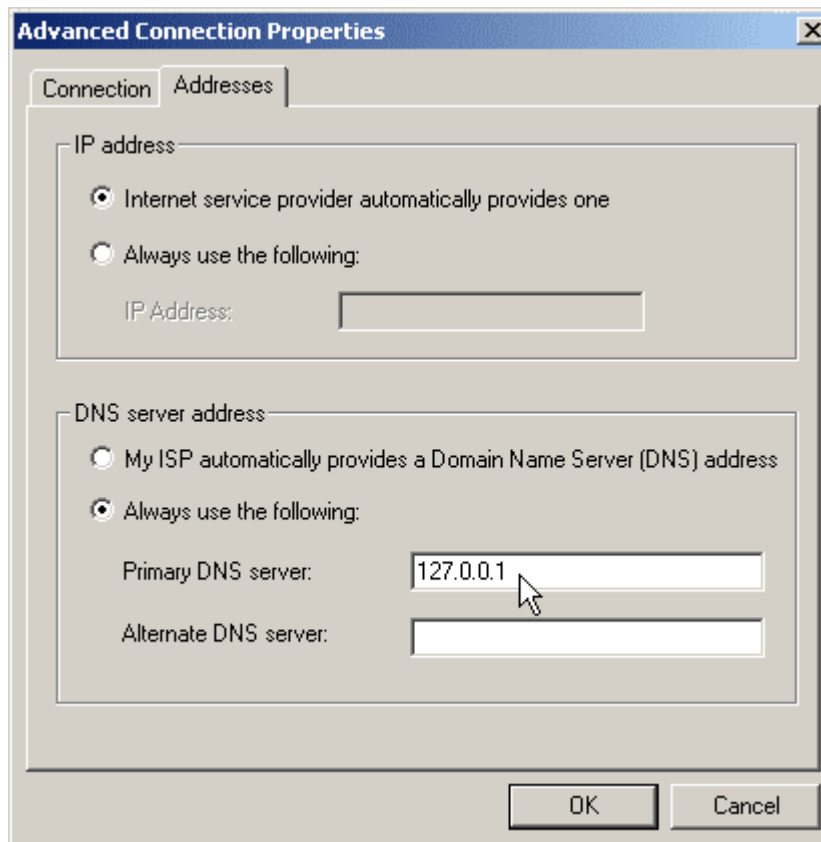
At "Setting up your Internet connection", select "I connect through a phone line and a modem" and click "Next".

**Please proceed to the following image on the next page of this document.**

The image shows a screenshot of the "Internet Connection Wizard" dialog box. The title bar reads "Internet Connection Wizard" with a close button (X) on the right. Below the title bar, the text "Step 1 of 3: Internet account connection information" is displayed. A mouse cursor is pointing at a star icon in the top right corner. The main area contains the instruction "Type the phone number you dial to connect to your ISP." Below this, there are two input fields: "Area code:" (empty) and "Telephone number:" (containing "555-555-5555"). A "Country/region name and code:" dropdown menu is set to "United States of America (1)". A checkbox labeled "Use area code and dialing rules" is unchecked. At the bottom left, there is a note: "To configure connection properties, click Advanced. (Most ISPs do not require advanced settings.)" To the right of this note is an "Advanced..." button with a mouse cursor over it. At the very bottom, there are three buttons: "< Back", "Next >", and "Cancel".

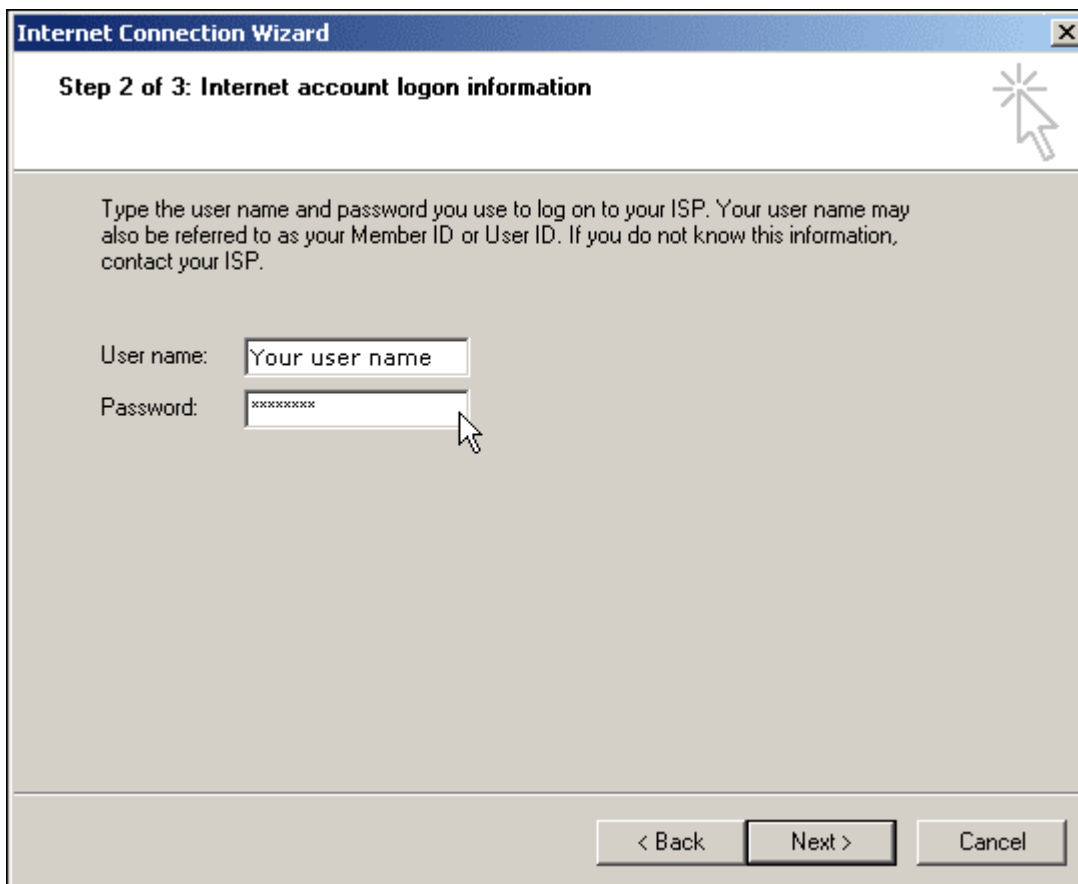
At "Step 1 of 3: Internet account connection information", enter the necessary telephone data and click the "Advanced" button.

**Please proceed to the following image on the next page of this document.**



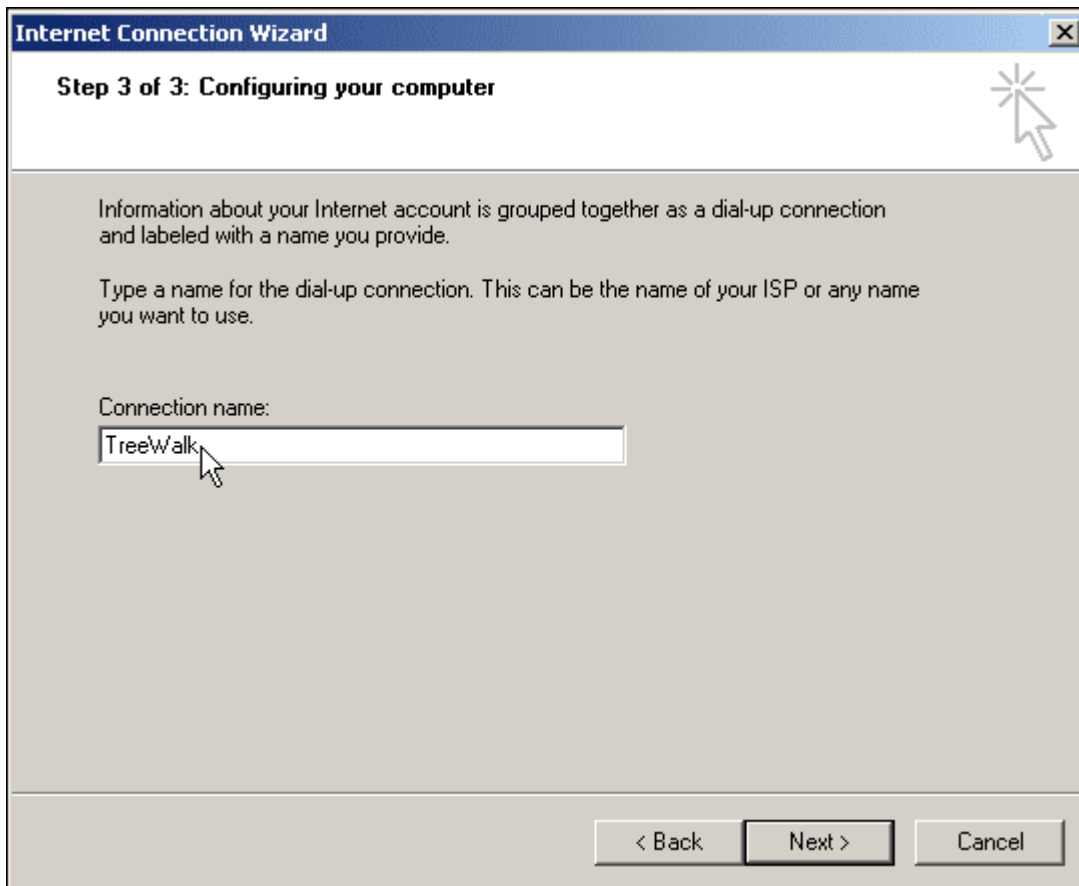
At the resulting "Advanced Connection Properties", under "DNS server address", be sure to select "Always use the following" and enter "127.0.0.1" (without quotation marks) for "Primary DNS server", then click the "Okay" button.

**Please proceed to the following image on the next page of this document.**



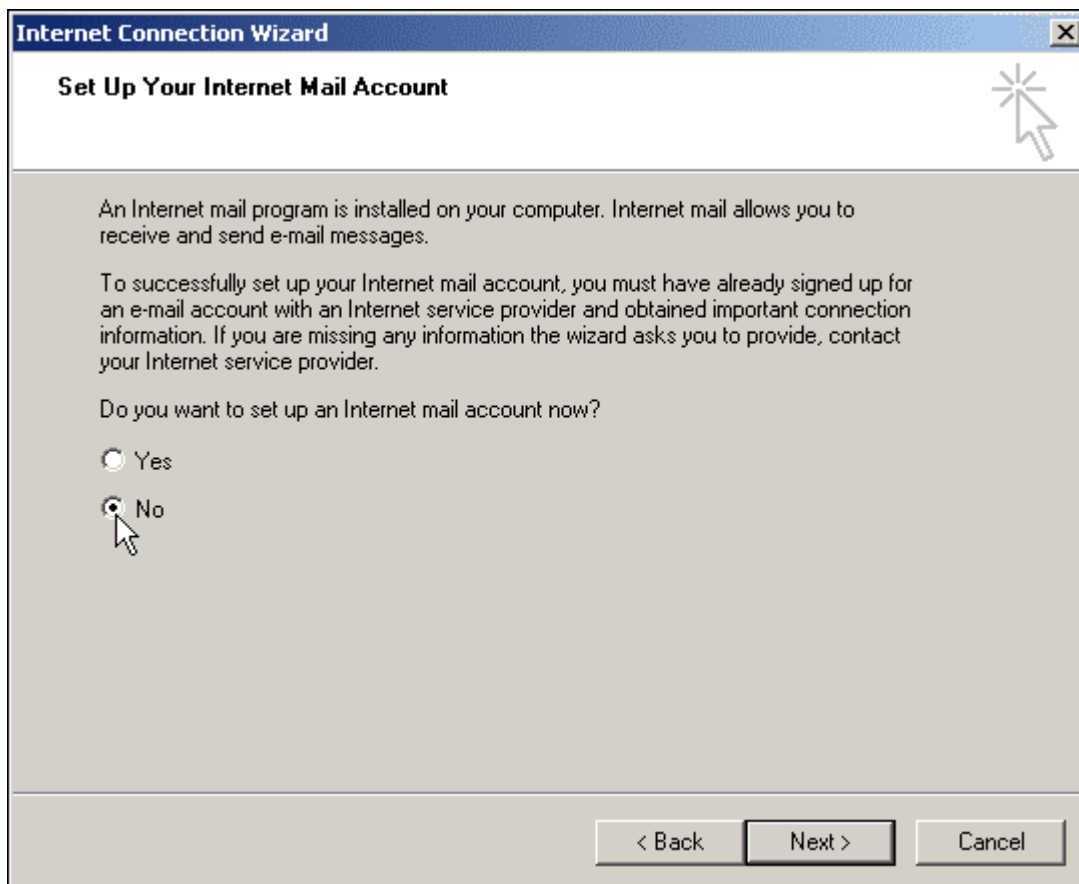
This returns you to the "Internet Connection Wizard" for "Step 2 of 3: Internet account logon information". Enter your user name and password exactly as required, and click "Next".

**Please proceed to the following image on the next page of this document.**



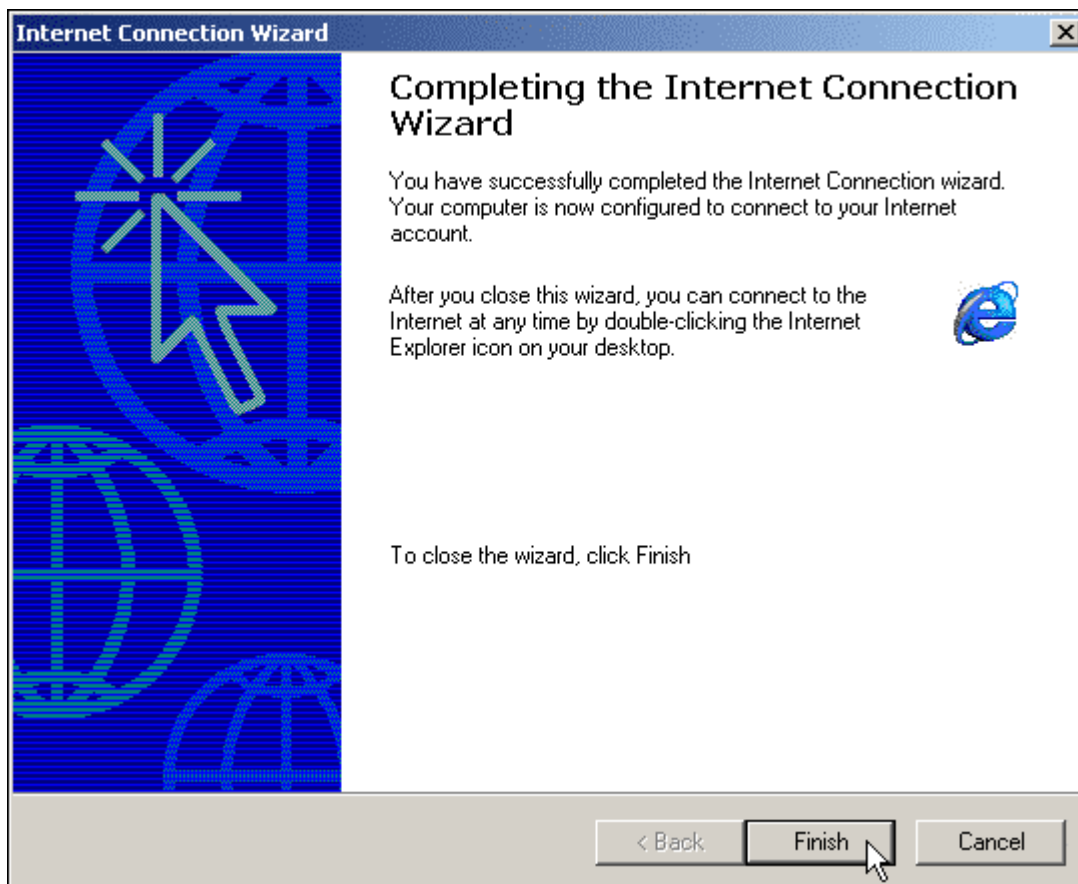
For "Step 3 of 3: Configuring your computer", enter an appropriate "Connection name" and click "Next".

**Please proceed to the following image on the next page of this document.**



At "Setup Your Internet Mail Account", select "No" and click "Next".

**Please proceed to the following image on the next page of this document.**



At "Completing the Internet Connection Wizard", click "Finish". Note that it says "After you close this wizard, you can connect to the Internet at any time by double-clicking the Internet Explorer icon on your desktop" but you can also go back to "Start > Settings > Network and Dial-up Connections > Make New Connection" (or back into the Control Panel > Network and Dial-up Connections) and right-click your newly created connection icon and select the option to create a Desktop shortcut icon from there.

***That's all there is to it! Happy surfing!***

Copyright © 2000-2005 [ntcanuck.com](http://ntcanuck.com) All rights reserved