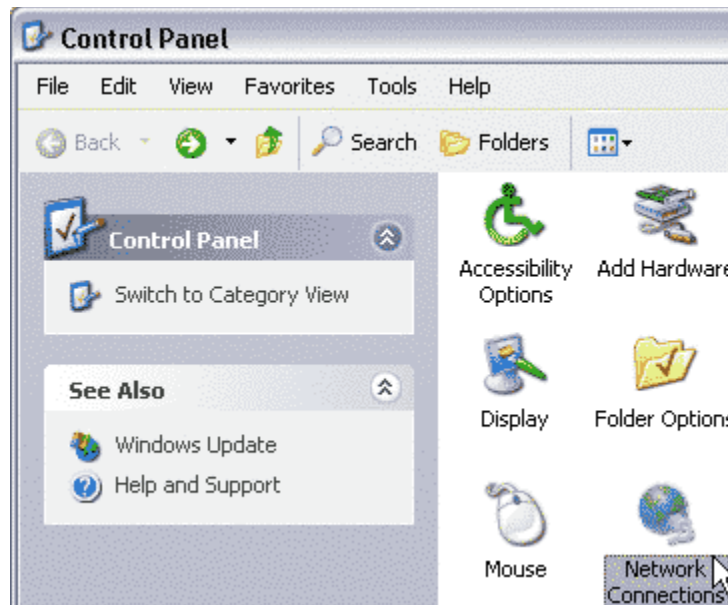


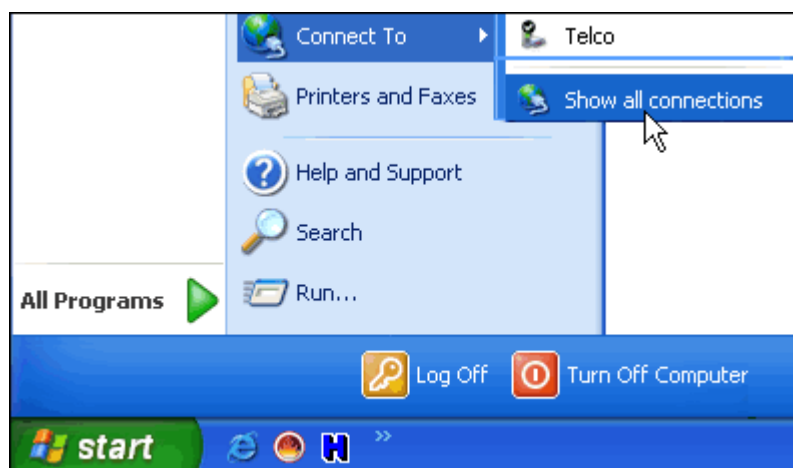
TreeWalk and Windows XP Dial-up

Make sure you have ALL the information required to connect to your ISP before you begin!

Setting up TreeWalk on XP is generally done for you automatically, but if you find that you want to make a new dial-up connection anyway, we've provided this page to assist you.

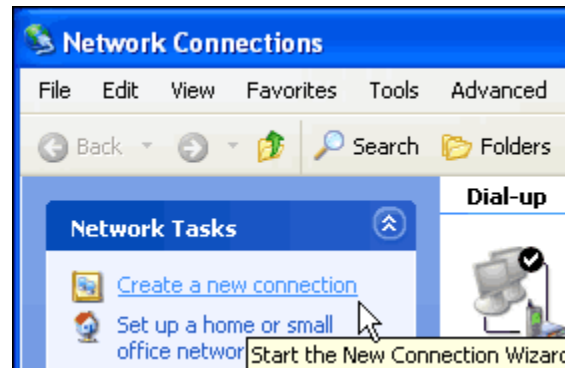


You can access the "Network Connections" icon in the Control Panel applet to delete your old connection and to make another if you don't have access through your "Start" menu as shown next. (If you have any trouble doing this, just press the "F1" function key on your keyboard and enter "Disable a network component", without the quotation marks, into Windows Help and look for a "Network Connections" link.)



Okay, now you've deleted your old connection icon inside "Network Connections". We'll use another way to begin recreating it, if you're not comfortable working within the Control Panel (as depicted above). Beginning at the "Start" menu button, select these items in the same order: Start > Connect To > Show all connections. (As you might notice, you may be able to gain access

to the Control Panel this way too.)



You should now be at the "Network Connections" folder. Select "Create a new connection".



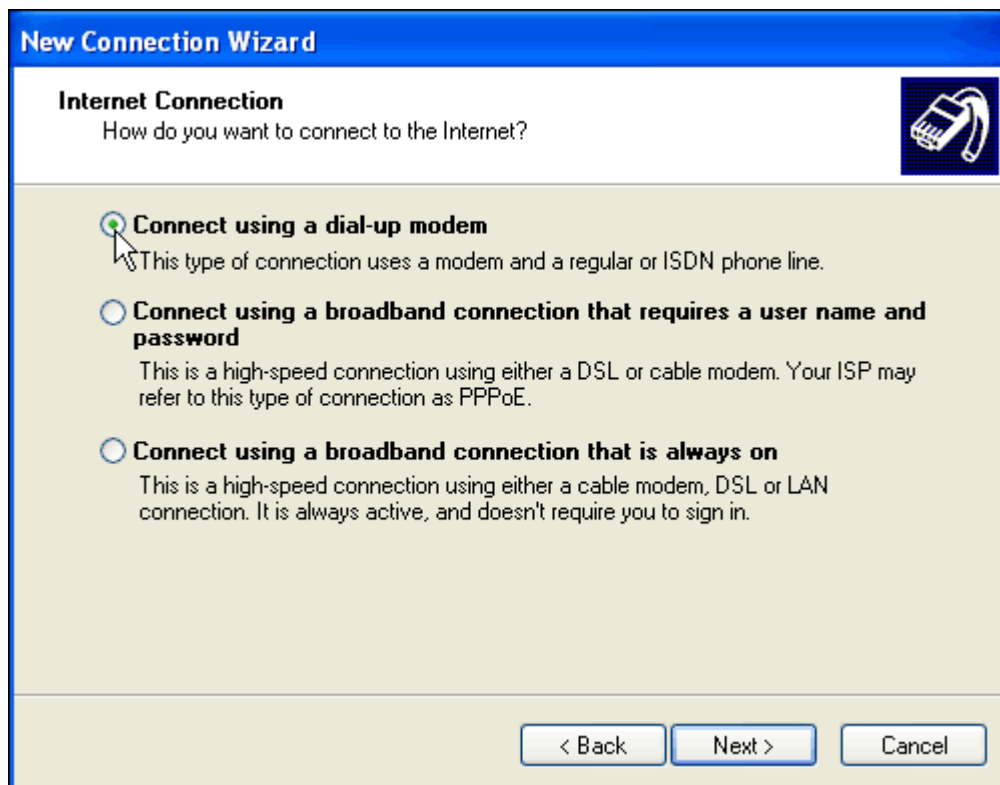
That should open the "New Connection Wizard" for you. Click "Next".



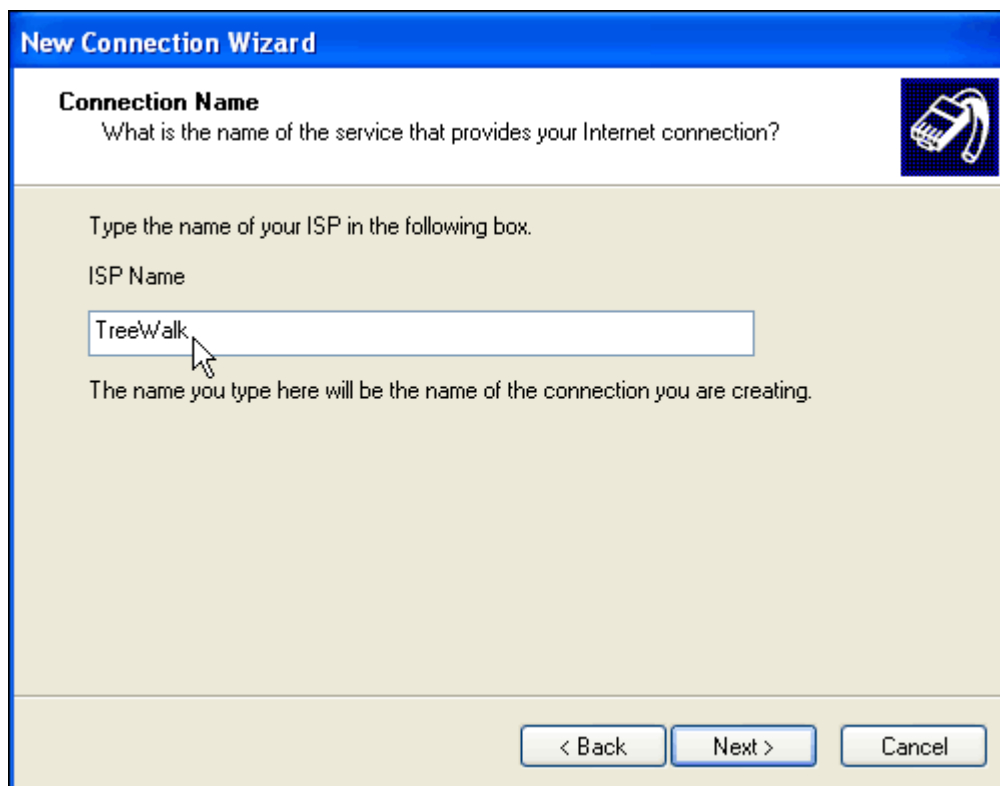
At "Network Connection Type", select "Connect to the Internet" and click "Next".



At the "Getting Ready" screen, select "Setup my connection manually" and click "Next".



For the "Internet Connection" sheet, select "Connect using a dial-up modem" and click "Next".



At "Connection Name", enter an appropriate name under "ISP Name" and click "Next".

New Connection Wizard

Phone Number to Dial
What is your ISP's phone number?

Type the phone number below.

Phone number:
Access number goes here!

You might need to include a "1" or the area code, or both. If you are not sure you need the extra numbers, dial the phone number on your telephone. If you hear a modem sound, the number dialed is correct.

< Back Next > Cancel

At "Phone Number to Dial", enter the dial-in access number your ISP requires and click "Next".

New Connection Wizard

Internet Account Information
You will need an account name and password to sign in to your Internet account.

Type an ISP account name and password, then write down this information and store it in a safe place. (If you have forgotten an existing account name or password, contact your ISP.)

User name: Your user name goes here!

Password: ●●●●●●

Confirm password: ●●●●●●

Use this account name and password when anyone connects to the Internet from this computer

Make this the default Internet connection

< Back Next > Cancel

At "Internet Account Information", enter your user name and password exactly as required.

Review the two check-box options and click "Next".



At "Completing the New Connection Wizard", you might want to ensure there's a checkmark in the box for "Add a shortcut to this connection to my desktop" and click "Finish".

That's all there is to it! Happy surfing!

Copyright © 2000-2005 ntcanuck.com All rights reserved